

Installation of Allegro CL 7.0 and related products

This document contains the following sections:

[1.0 Installation introduction](#)

[1.1 Distribution is on two CD's](#)

[1.2 Definitions of some terms used in this document](#)

[1.3 Installation sizes and supported Operating System versions](#)

[1.3.1 Operating System versions released after the release of Allegro CL 7.0](#)

[1.4 Warning to Linux \(x86\) and FreeBSD users about long filenames on CD](#)

[2.0 Preinstallation Steps](#)

[2.1 Increasing the default stack size on HP \(formerly Compaq\) Alpha and Mac OS X machines](#)

[2.2 The procs package must be installed on Linux and FreeBSD](#)

[2.3 Preparing for AllegroStore installation](#)

[2.4 You can leave Allegro CL 6.2 installed](#)

[3.0 Installation steps](#)

[4.0 Notes for installation of Allegro CL on UNIX](#)

[4.1 Testing that the installation of Allegro CL on Unix was successful](#)

[4.2 What to do if bunzip2 won't execute on the CD](#)

[5.0 Installation on Windows](#)

[5.1 Testing that the installation of Allegro CL on Windows was successful](#)

[6.0 Installation instructions and information for AllegroStore users](#)

[6.1 Pre-Installation notes for AllegroStore users](#)

[6.2 Compatibility notes for AllegroStore users](#)

[6.3 Installing ObjectStore](#)

[6.3.1 Step 1: Copying and unencrypting the ObjectStore distribution](#)

[6.3.2 Step 2: Install ObjectStore](#)

[6.3.3 Step 3: Set up the individual Runtime environments](#)

[6.3.4 Step 4: Build an AllegroStore Lisp image \[optional\]](#)

[6.3.5 Step 5: Test the AllegroStore installation](#)

[7.0 Installing Emacs from the web](#)

[8.0 Installing OpenSSL libraries on Windows](#)

[9.0 Other Allegro CL products](#)

[10.0 Other material on the CD](#)

[11.0 Getting a license file](#)

[12.0 Installing source code](#)

[13.0 The Trial Edition](#)

[13.1 Information on the Trial license](#)

[13.2 Information on installing the Trial edition](#)

1.0 Installation introduction

This document describes how to install Allegro CL and related products.

A printed copy of this document is supplied with the distribution CD's. (**Trial users** do not get a CD and so will not get a printed copy of this document. Trial users should read [Section 13.0 The Trial Edition](#).)

You may have been given information about downloading Allegro CL 7.0 over the net. Such information includes instructions for installing from the net. Only certain portions of this Installation Guide (having to do with installing additional products) are relevant when you install over the net.

You can install Allegro CL from the CD without any key or code (though you need a license file, as described below, in order to use Allegro CL). Once Allegro CL is installed, the documentation, including this file, is available in the *doc/* subdirectory (this file is *doc/installation.htm*). A copy of this file is also available on the Franz Inc. web site (www.franz.com).

All types (Professional, Enterprise, etc.) of Allegro CL for a particular platform and all add-on products are copied off the distribution CD onto your computer. A license file named *devel.lic* controls which products will be usable. This license file is supplied separately, as described in [Section 11.0 Getting a license file](#). **Allegro CL will not work without a license file properly installed in the Allegro directory. The distribution CD does not contain a license file. You must obtain a license file from Franz Inc. separately from the CD.**

If you do not have a license file or the license file you have does not seem to license the correct product mix, **contact your Account Manager** for

information. (If that link does not work, call Franz Inc. in California, USA, at +1 510-452-2000 or send email to support@franz.com or info@franz.com. In email, be sure to identify yourself and provide information on how you can be contacted.)

Once the material is read off the CD and the license file is installed, you can use the licensed Allegro CL version and all licensed add-on products. If you upgrade your Allegro CL version, or purchase a license for an add-on product, you will be given an updated license file. You do not have to re-read the CD. Simply installing the new license file makes the newly licensed products available for use.

1.1 Distribution is on two CD's

The distribution includes two CD's. They are labeled **One** and **Two**. The contents are printed on each CD.

1. **Allegro CL for AIX (32 and 64 bit), HP (32 and 64 bit), Linux x86, Solaris (32 and 64 bit), and Compaq Alpha (32 and 64 bit).**
 2. **Allegro CL for FreeBSD, Linux x86, Linux amd64 64-bit, Linux-ppc, Mac OS X, and Windows. Also several auxiliary directories: doc (with pdf versions of most documentation files), openssl, and cbind.**
-

1.2 Definitions of some terms used in this document

- **Allegro directory:** the directory where Allegro CL is installed. On Windows (where the default is programmed into the installation program), the default is *[Main Drive, typically C]:\Program Files\acl70*. When we describe a pathname including the Allegro directory, we typically surround it in brackets, for example: the directory where you put patch files is *[Allegro directory]/update/*.
 - **CD:** a compact disk containing all or part of the Allegro CL distribution. The standard distribution (Enterprise and Professional versions) contains two CDs. If you download off the net (as you do with the Trial version), you will do so into a directory which should be considered the virtual CD.
 - **CD drive:** the device on your computer for reading CD's. On Windows, the CD drive is typically identified with a letter (such as F: or G:). On UNIX, it is typically mounted on a filesystem with a name like */cdrom/cdrom0/*. In this document, we do not discuss how to mount a CD filesystem on UNIX (if that is necessary). Please refer to the documentation for your hardware and Operating System if you have difficulty reading data from the CD.
 - **Platform:** the type of computer you are installing on. Platforms are identified by Operating Systems (Windows, Solaris, HP-UX, etc.)
-

1.3 Installation sizes and supported Operating System versions

The size of the Allegro directory after installation, but without ObjectStore installed is approximately 200 Mbytes on UNIX/Linux/Mac OS X and 240 Mbytes on Windows. More space may be required during installation for temporary files.

The minimal supported versions of the operating systems on platforms where Allegro CL runs is listed below. Platforms that have 32-bit and 64-bit versions are so indicated; other platforms are 32-bit. Allegro CL 7.0 runs on all operating system versions released (not in beta or pre-release form as of October 15, 2004. See [Section 1.3.1 Operating System versions released after the release of Allegro CL 7.0](#) for places to obtain information on operating systems released after that date.

- HP Tru64 UNIX 5.1 (32-bit)
 - HP Tru64 UNIX 5.1 (64-bit)
 - HP-UX 11.00 (32-bit)
 - HP-UX 11.00 (64-bit)
 - FreeBSD 5.2
 - Linux (x86), glibc 2.2 (32-bit)
 - Linux (AMD64), glibc 2.3 (64-bit)
 - Linux (PPC), glibc 2.3
 - Apple Mac OS X 10.3
 - Microsoft Windows 98/Me and 2000/XP/Server 2003
 - IBM AIX 5.1 (32-bit)
 - IBM AIX 5.1 (64-bit)
 - Sun Solaris 2.8 (32-bit)
 - Sun Solaris 2.8 (64-bit)
-

1.3.1 Operating System versions released after the release of Allegro CL 7.0

Franz Inc. cannot maintain the same release schedule as the many operating system providers on the many platforms we support. Usually Allegro Common Lisp and all of its component parts will work on new Operating System versions that become available after release. But sometimes Allegro CL patches or operating-system patches, or installation tweaks, will be required before Lisp will run on an updated system.

Franz Inc. usually finds out about any such issues soon after new operating system releases appear and devises any necessary patches or compatibility procedures. We maintain current information about operating system versions on this web page: <http://www.franz.com/support/osinfo.lhtml>. We strongly advise you to check that page before updating your operating system. If we know that the new operating system is compatible, or is compatible with certain patches, you will find the information there. Similarly if it is known to be incompatible. If the new operating system is not yet listed it may be that it has not yet been tested.

If you want to update to an operating system not yet listed, and Lisp operation is important to you, it may be wise to test the new operating system on an auxiliary machine, or provide some way to roll back the upgrade if problems appear.

1.4 Warning to Linux (x86) and FreeBSD users about long filenames on CD

CD Two (for FreeBSD, Linux (x86), and Windows) is written in *Joliet* format, which supports long filenames (rather than allowing only 8.3 format). However, you should not have a problem reading the CD on **FreeBSD** and **Linux (x86)** even if you have rebuilt your kernel so that it does not support the *Joliet* format, so no filenames on the Cds are likely to be affected.

Note further that CD One is written in Rockridge format, which is supported on all UNIX platforms. CD One contains certain material for FreeBSD and Linux (x86) but there should be no problem reading those CDs.

2.0 Preinstallation Steps

Before installing Allegro CL, consider the following:

1. **Default stack sizes are likely too small on HP (formerly Compaq) Alpha and Mac OS X machines.** See [Section 2.1 Increasing the default stack size on HP \(formerly Compaq\) Alpha and Mac OS X machines](#), which directs you to instructions in the [release-notes.htm](#) for increasing the default stack sizes on those machines.
 2. **On Linux and FreeBSD, the procs package must be installed.** See [Section 2.2 The procs package must be installed on Linux and FreeBSD](#) for details.
 3. **AllegroStore users should make sure their databases are properly saved.** See [Section 6.1 Pre-Installation notes for AllegroStore users](#) for details.
 4. **You need not uninstall Allegro CL 6.2** See [Section 2.4 You can leave Allegro CL 6.2 installed](#).
-

2.1 Increasing the default stack size on HP (formerly Compaq) Alpha and Mac OS X machines

The default stack size limit is apparently 2 Megabytes on a HP (formerly Compaq) Alpha and 512 Kilobytes on a Mac OS X machine. These values are too low for normal stack overflow handling when using Allegro CL. You can increase the stack size in a particular shell, but it is better to increase it for the machine as a whole. **Note that this change is best performed by a system administrator or similarly trained person.**

See [HP Alpha running Tru64: default stack size should be increased](#) in [release-notes.htm](#) for information on changing the default on Compaq Alpha machines.

See [Increasing stack size on Mac OS X](#) in [release-notes.htm](#) for information on changing the default on Mac OS X machines.

2.2 The procs package must be installed on Linux and FreeBSD

On Linux and FreeBSD systems, the **procs** package is required for Allegro CL operation. **Procs** is the **process filesystem** package which establishes memory map info for each process in */proc* on the system (see the man page for procs). Allegro CL uses that info to determine where **mmap()** can be done. The **Procs** package is optional on these operating systems and may not be installed. Please see your operating system documentation for further information on installing the package if it is not there.

(Procs is necessary on all UNIX and UNIX-like operating systems, but it does not seem to be optional except on Linux and FreeBSD. If it is optional, it must be installed in order to use Allegro CL.)

2.3 Preparing for AllegroStore installation

Allegrostore 2.1.8 (supplied with Allegro CL 7.0) uses an updated schema, which makes databases for the current version incompatible with databases of previous Allegrostore versions (such as AllegroStore 2.1 supplied with Allegro CL 6.2). Users of Allegro CL 7.0 should perform the following steps to convert their databases.

1. Before installing Allegro CL 7.0 AllegroStore, dump the databases using the Allegro CL 6.2 AllegroStore **asdump** program.
2. Install Allegro CL 7.0 AllegroStore (which is to say, install Allegro CL 7.0).
3. Restore the dumped databases using the Allegro CL 7.0 AllegroStore **asrestore** program.

asdump/asrestore note: versions of Allegrostore prior to that supplied with Allegro CL 7.0, asdump would dump raw arrays (typically arrays of element-type signed- or unsigned-byte) in the endianness of the dumping platform. This would result in raw arrays being recreated incorrectly if the dumped database was restored on a platform of differing endianness. This problem is corrected in Allegro CL 7.0 by dumping raw arrays in network byte-order. However, this may cause incorrect restoring of raw arrays when upgrading databases to the current Allegrostore release. To correct this, asrestore may be used with a **-r** option, which informs it not to make any assumptions about byte-ordering of raw arrays. **The -r option to asrestore should only be used when converting databases from previous versions of allegrostore.** It is not recommended for use when dumping and restoring ACL 7.0 databases. The **-r** option is safe to use even if you are not sure if raw arrays have been stored in the database.

AllegroStore installation is described in [Section 6.0 Installation instructions and information for AllegroStore users](#).

2.4 You can leave Allegro CL 6.2 installed

It is not necessary to delete version 6.2 if you have that installed, but note that on Windows, the registry will be updated so extensions (such as .lpr and .dxi) refer to Allegro CL 7.0 instead of earlier versions.

3.0 Installation steps

If you have the **Trial** edition, see [Section 13.0 The Trial Edition](#).

Here are the installation steps in brief:

1. **Get the license file.** See [Section 11.0 Getting a license file](#). You can install without getting a license file but you cannot use the product without a license file.
2. **Put the CD for your platform in the CD drive.** If you are installing on HP, Solaris, or Compaq Alpha, insert CD One. Otherwise insert CD Two. **Windows customers:** if the autorun option is enabled, placing the CD in the drive will initiate the installation procedure.
3. **UNIX:** cd into the directory `[cdrom]/[platform]/`. On Solaris, for example,

```
% cd /cdrom/cdrom0/solaris/
```

See [Section 4.0 Notes for installation of Allegro CL on UNIX](#) for more details.

Windows: (assuming the installation process has not started automatically) find the directory in your Windows Explorer `[cdrom-drive-letter]:\windows\`.

4. **Decide where you wish to install the Allegro Directory.** On UNIX, the typical location is `/usr/local/acl70/` (`/usr/local/acl70_trial/` for the Trial edition). On Windows, the typical location is `C:\Program Files\acl70\` (`>C:\Program Files\acl70_trial\` for the Trial edition). However, you can choose any location you like.
5. **UNIX: uncompress and untar the distribution file.** The command is (using the typical location)

```
% ./bunzip2 < acl70.bz2 | (cd /usr/local; tar xf -)
```

If the copy of **bunzip2** on the CD will not execute (some machines restrict running executables on CD's) see [Section 4.2 What to do if bunzip2 won't execute on the CD](#) for what to do.

See [Section 4.0 Notes for installation of Allegro CL on UNIX](#) for more details on this step.

Windows: run the exe file. Double click on it if using the Windows Explorer. Execute it if at a Command Prompt or a DOS prompt. Follow the instructions that appear. See [Section 5.0 Installation on Windows](#) for full details.

6. **Copy the license file into [Allegro directory]/devel.lic.** The license file you obtained in step one above should be copied into the Allegro

directory and its name should be changed to *devel.lic*. (In the original version of this document, this step was after the next step **AllegroStore customers: install ObjectStore**. This was an error. The license file must be in the Allegro directory for the installation of ObjectStore to succeed.)

7. **AllegroStore customers: install ObjectStore.**: See [Section 6.0 Installation instructions and information for AllegroStore users](#) for details.
Note: on some platforms, you should dump your databases. Be sure you do this if it is necessary. The license file must be in the Allegro directory before you attempt to install ObjectStore.
8. **Install Emacs off the web (optional)**. See [Section 7.0 Installing Emacs from the web](#) for details.
9. **[Windows only] Install OpenSSL libraries if desired and available (optional)**. Users interested in writing applications using secure sockets may wish to install the OpenSSL libraries. See [Section 8.0 Installing OpenSSL libraries on Windows](#) for instructions and more details. OpenSSL libraries need installation only for Windows.
10. **Copy other desired material from the CD, if any, and remove the CD from the drive**. The additional material includes certain documentation files in PDF format (these file are in HTML format in the distribution) and files necessary for the Cbind facility. See [Section 10.0 Other material on the CD](#) for details.

Be sure that you keep the CD available in case re-installation is necessary, but (unless you purchase an AllegroStore license and need to install ObjectStore) it is not necessary to copy additional material off the CD to use add-on products you may purchase licenses for later. All add-on products are included in the distribution copied from the CD following the procedure given here.
11. **Run `sys:update-allegro`**: patches (correcting bugs or providing new features) are released for Allegro CL regularly. For normal usage, we recommend that you update regularly, including immediately after installation. Do this by starting Lisp and evaluating (`sys:update-allegro`). See **`sys:update-allegro`** and also **Patches in [introduction.htm](#)**.

4.0 Notes for installation of Allegro CL on UNIX

CD organization

The Allegro CL distributions for AIX, HP, Solaris, and Compaq Alpha are on CD One. The Allegro CL distributions for other UNIX platforms are on CD Two. The distributions are in directories whose names refer to the platform and, where necessary, to the operating system version. In each case, we give the minimal OS version that is supported. Generally later versions are also supported, but we cannot have tested on versions released after Allegro 7.0 was released. For information on operating systems released after the release of Allegro CL 7.0 (approximately October 18, 2004), see [Section 1.3.1 Operating System versions released after the release of Allegro CL 7.0](#).

The directories on CD One are:

- **aix/**: for IBM workstations running 32-bit AIX.
- **aix.64/**: for IBM workstations running 64-bit AIX.
- **hpux11/**: for 32-bit Lisp on HP-UX 11.00.
- **hpux11.64/**: for 64-bit Lisp on HP-UX 11.00.
- **solaris/**: for 32-bit Lisp on all Suns running Solaris.
- **solaris.64/**: for 64-bit Lisp on all Suns running Solaris.
- **tru64/**: for Compaq (formerly DEC) machines running the Tru64 operating system wishing to use a 32-bit Lisp. (The 64 bit version is in the directory **tru64.64/**.)
- **tru64.64/**: for Compaq (formerly DEC) machines running the Tru64 operating system wishing to use a 64-bit Lisp.

The directories on CD Two are:

- **freebsd/**: for Intel-based machines running the FreeBSD operating system.
- **linux86/**: for machines with the Linux on x86 (Intel) machines.
- **linuxppc/**: for machines with the PowerPC chip running Linux.
- **linuxamd64.64/**: for 64-bit Allegro CL on 64-bit Linux running on amd64 chips.
- **macosx/**: for Macintosh running Mac OS X.

CD 2 also contains the **windows/** directory and some additional directories containing add-on material.

In each UNIX/Linux/Mac OS X platform-specific directory, there are two files. If the distribution supports AllegroStore, there is an *ostore/* subdirectory. The two files are:

- A compressed file named *acl70.bz2*.
- A program, *bunzip2*, for uncompressing the file.

AllegroStore customers will also copy material for a new version of ObjectStore on some platforms, as described in the detailed steps below.

In the **windows/** directory there is a self-extracting executable file *acl70.exe*, an **ostore/** directory for AllegroStore customers, and a **openssl/** directory.

To install, insert the correct CD into the CD drive. It is not necessary to be root to install, but you must have write permission in the directory where the Allegro Directory will be located (you choose that location; the typical location is `/usr/local/`). Here are the steps after inserting the CD into the CD drive.

Note to Trial users: the link from [Section 13.2 Information on installing the Trial edition](#) comes here. Follow the instructions below to install the Trial edition for Linux and FreeBSD.

1. **Change into the CD directory.** On Suns, for example, the command is typically

```
% cd /cdrom/cdrom0/
```

2. **Change into the directory for your platform.** For the 32-bit version on Suns, for example, do:

```
% cd solaris
```

For the 64-bit version on Suns, for example, do:

```
% cd solaris.64
```

If you are installing the Trial edition, cd into the directory where you downloaded the distribution files.

3. **Run the following commands to install.** Replace `/usr/local` with the name of the directory you wish to be above the Allegro directory, if you wish to use a different location.

```
% bunzip2 < acl70.bz2 | (cd /usr/local; tar xf -)
```

If the copy of **bunzip2** on the CD will not execute (some machines restrict running executables on CD's) see [Section 4.2 What to do if bunzip2 won't execute on the CD](#) for what to do.

A directory named `acl70/` (`acl70_trial/` for trial) should not be present in the location specified to the **tar** portion of the command above (`/usr/local/acl70/` or `/usr/local/acl70_trial/` if you used the exact command above). It will be created and is the *Allegro directory*.

4. **Copy the license file** into the Allegro directory and change its name to `devel.lic`.
5. **If you are an AllegroStore customer**, install the new version of ObjectStore as described in [Section 6.0 Installation instructions and information for AllegroStore users](#).
6. **Run `sys:update-allegro`:** patches (correcting bugs or providing new features) are released for Allegro CL regularly. For normal usage, we recommend that you update regularly, including immediately after installation. Do this by starting Lisp and evaluating (`sys:update-allegro`). See **`sys:update-allegro`** and also **Patches in `introduction.htm`**.

Allegro CL is now installed. See [Section 4.1 Testing that the installation of Allegro CL on Unix was successful](#) for information on how to test that Allegro CL is installed properly.

Also see these documentation files to start with:

- **release-notes.htm:** the Release Notes for Allegro CL and all add on products.
- **startup.htm:** this document describes how to start Allegro CL and what the startup procedure is. See particularly **Starting on UNIX machines** in that document.
- **introduction.htm:** this document is the introduction to and overview of the documentation and has links to all other documents.
- **eli.htm:** this is the documentation file for the Emacs-Lisp interface. On UNIX, Allegro CL, works best for development when run as a subprocess of Emacs. The Emacs-Lisp interface provides many commands etc. for facilitating running Allegro CL in that way. See particularly **What should be in your .emacs file** in that document for information on what to add to your `.emacs` in order to ensure the Emacs-Lisp interface code is loaded. Allegro Composer only works when Allegro CL is run as a subprocess of Emacs. See **composer.htm**.

There is no Allegro Composer executable or image file after installation. To use Allegro Composer, evaluate (`require :composer`) after starting Allegro CL. An Allegro Composer binary can be built by using `buildcomposer.cl`. See **composer.htm**.

There is no CLIM image file, but one can be built using `buildclim.cl`.

Note for CLIM on Linux, FreeBSD: you must have version 2.1 or 2.2 of Motif. (Version 2.2 was released in early 2002.) A free version is available from www.openmotif.org. Redhat Linux 7.2 is supplied with Lesstif, a version of Motif that **does not work with CLIM**. See [faq/faq2-7.htm item 2-7.2](#) for information on how to install Redhat Linux 7.2 without lesstif and how to uninstall lesstif if already present. On all other Unix platforms, CLIM uses the platform-supplied Motif.

Note for CLIM on Mac OS X: you must have version 2.2.2 Motif. This version is available at no charge from www.openmotif.org.

Users wishing to display Japanese characters need the k14 font. As also noted **here** in **release-notes.htm**, the `k14` font is needed to display Japanese characters in a CLIM demo. This font appears to be missing from most X server font libraries. We are making available a public domain version of this font in the file `[Allegro directory]/misc/k14.pcf`. Please see your X server documentation for information on how to install this file as a valid font.

4.1 Testing that the installation of Allegro CL on Unix was successful

We will test the installation by starting Allegro CL from a shell prompt. To a shell prompt, enter the full path of the Allegro CL executable (on installation, one of *mlisp*, *alisp*, *mlisp8*, and *mlisp8*; only *alisp* is provided with the Trial edition) to the shell prompt.

Assuming the Allegro directory is `/usr/local/acl70/` and that you wish to run the *mlisp* executable, enter:

```
/usr/local/acl70/mlisp
```

With the Trial edition, only *alisp* is provided, so do:

```
/usr/local/acl70_trial/alisp
```

Allegro CL should start up. You will see the banner and perhaps additional messages, and the first prompt (the exact text depends on the platform and which image you are running, so you may see something slightly different from what is printed here):

```
Allegro CL Enterprise Edition 7.0 [HP Prism]
Copyright (C) 1985-2004, Franz Inc., Oakland, CA, USA. All Rights Reserved.
;; Optimization settings: safety 1, space 1, speed 1, debug 2.
;; For a complete description of all compiler switches given the
;; current optimization settings evaluate (EXPLAIN-COMPILER-SETTINGS).
;; Current reader case mode: :case-sensitive-lower
user(1):
```

You may see the message

```
pure lisp library being relocated by XXX bytes
```

(where XXX is some integer). Do not worry if you do. The message is for information only. It means that the memory location preassigned for the Lisp library was unavailable and a new location is being used.

To the Lisp prompt `user(1):`, enter the form `(require :build)`:

```
user(1): (require :build)
; Fast loading from bundle code/build.fasl.
t
```

If you see the ``Fast loading...'` message, that means that Allegro CL can find the Allegro directory correctly and its library and it means that Allegro CL is correctly installed and working. You may now either exit Allegro CL by entering `:exit` (see the top-level command **:exit**):

```
user(2): :exit
```

or you may continue using Allegro CL.

4.2 What to do if bunzip2 won't execute on the CD

On the distribution CDs, the various UNIX directories which contain compressed files (`[CD]/solaris/` on CD One and `[CD]/linux86/` on CD Two, for example), also contain the program to uncompress the files, **bunzip2**. This program is put on the CD with an executable mode, but some machines restrict running programs on CDs. On such machines, you will not be able to execute **bunzip2** in commands like:

```
% ./bunzip2 < acl70.bz2 | (cd /usr/local; tar xf -)
```

In that case, you can either:

- **Use a version of bunzip2 already available to you on your machine.** There is nothing special about the versions on the CD.
- **Copy bunzip2 from the CD to a convenient location and use it from there.** After copying it, change its mode as follows:

```
% chmod +x bunzip2
```

In either case, the command to uncompress the files becomes (assuming the current directory is the CD directory containing the compressed file):

```
% [directory with bunzip2]/bunzip2 < acl70.bz2 | (cd /usr/local; tar xf -)
```

5.0 Installation on Windows

CD organization

The Allegro CL distributions for Windows is on CD Two. (That CD also has the distribution for various Unix distributions.) The Windows distribution is in the *windows/* subdirectory of the CD.

Windows 9x, Me, NT, 2000, and XP are all supported.

The *windows/* subdirectory contains one file, *acl70.exe* and two subdirectories, *ostore/* and *openssl/*.

acl70.exe is a self-extracting executable that, when executed, runs an installation program.

AllegroStore customers need to install ObjectStore, as described in the detailed steps below.

To install, you should exit all programs (step 1) and then insert CD Two (the one containing the Windows distribution) into the CD drive (step 2). If you have autorun enabled, the installation process will start automatically. If not, you must start the executable, as described in steps 3 and 4.

Note to Trial users: the link from [Section 13.2 Information on installing the Trial edition](#) comes here. Follow the instructions below to install the Trial edition for Windows.

1. **Exit all running programs.** Installation is most likely to be trouble free if there are no other programs running.
2. **Insert the CD into the CD drive.** If you have autorun enabled (which is typical), the installation program will start automatically and you can skip to step 5. If not, proceed to step 3. If you are installing the Trial edition, you have no CD, so proceed to step 3.
3. **Display the Windows Explorer.** [This step is not necessary if autorun is enabled.] Open the *windows* subdirectory of the CD drive. You should see the file *acl70.exe* (and also subdirectories *ostore* and *openssl*). If you are installing the Trial edition, find the directory into which you downloaded the Trial distribution.
4. **Double click on *acl70.exe*** to execute it. [This step is not necessary if autorun is enabled.] This starts an installation program. During the installation, dialogs appear asking for input, as described in the next steps. If you are installing the Trial edition, the filename is *acl70_trial.exe*.
5. **First dialog:** this is an informational dialog telling you again to exit all other running programs and informing you about licenses and copyrights. Click on the Cancel button if you wish to stop the installation (perhaps to exit running programs). Click Next to continue.
6. **Second dialog:** this dialog asks you for the location of the Allegro directory. A default is provided: *Program Files\acl70* (*Program Files\acl70_trial* for the Trial edition) on main drive (often C: but can be another drive). If you wish a location other than the default, click on the Browse button and select a directory. If you select an existing directory (not recommended), a warning dialog is displayed saying the directory exists and asking if you want to continue. Once you have selected the desired location for the Allegro directory, click the Next button. You can cancel by clicking the Cancel button.
7. **Third dialog:** this dialog asks if you wish to leave out portions of the distribution: the [Allegro CL] documentation (about 26 Mbytes), the ANSI spec documentation (about 11 Mbytes), and contributed files (about 3300 Kbytes). By default, the first two are included and the third left out.

If you do not install either the Allegro CL documentation and the ANSI spec, shortcuts relating to documentation on the Allegro CL menu item on the Start menu will link you to versions on the Franz Inc. web site. (However, if you have the space, it is best to include the documentation.) If you include the Allegro CL documentation but not the ANSI spec, links from the Allegro CL documentation to the ANSI spec will not work.

Check or uncheck the desired options. Click Cancel to cancel installation, Back to choose a different location, and Next to continue. If you click Next again, the installation will take place.

8. **A dialog may appear when the installation is finished** telling you you must restart the machine to complete the installation and asking if you want to do this now. (Restarting is not always necessary. Clicking Cancel ends the installation process for now and does not restart the machine. If restarting is required and you choose to delay it, do not use Allegro CL until you have restarted. We assume in the subsequent steps you have restarted if necessary.)
9. **Copy the license file into the Allegro directory** and change its name to *devel.lic*.
10. **If you are an AllegroStore customer**, install the new version of ObjectStore as described in [Section 6.0 Installation instructions and information for AllegroStore users](#).
11. **Run `sys:update-allegro`:** patches (correcting bugs or providing new features) are released for Allegro CL regularly. For normal usage, we recommend that you update regularly, including immediately after installation. Do this by starting Lisp and evaluating (`sys:update-allegro`). See **sys:update-allegro** and also **Patches in introduction.htm**.

Once Allegro CL is installed, see [Section 5.1 Testing that the installation of Allegro CL on Windows was successful](#) for information on how to test that Allegro CL is installed properly.

Allegro CL is now installed. See these documentation files to start with:

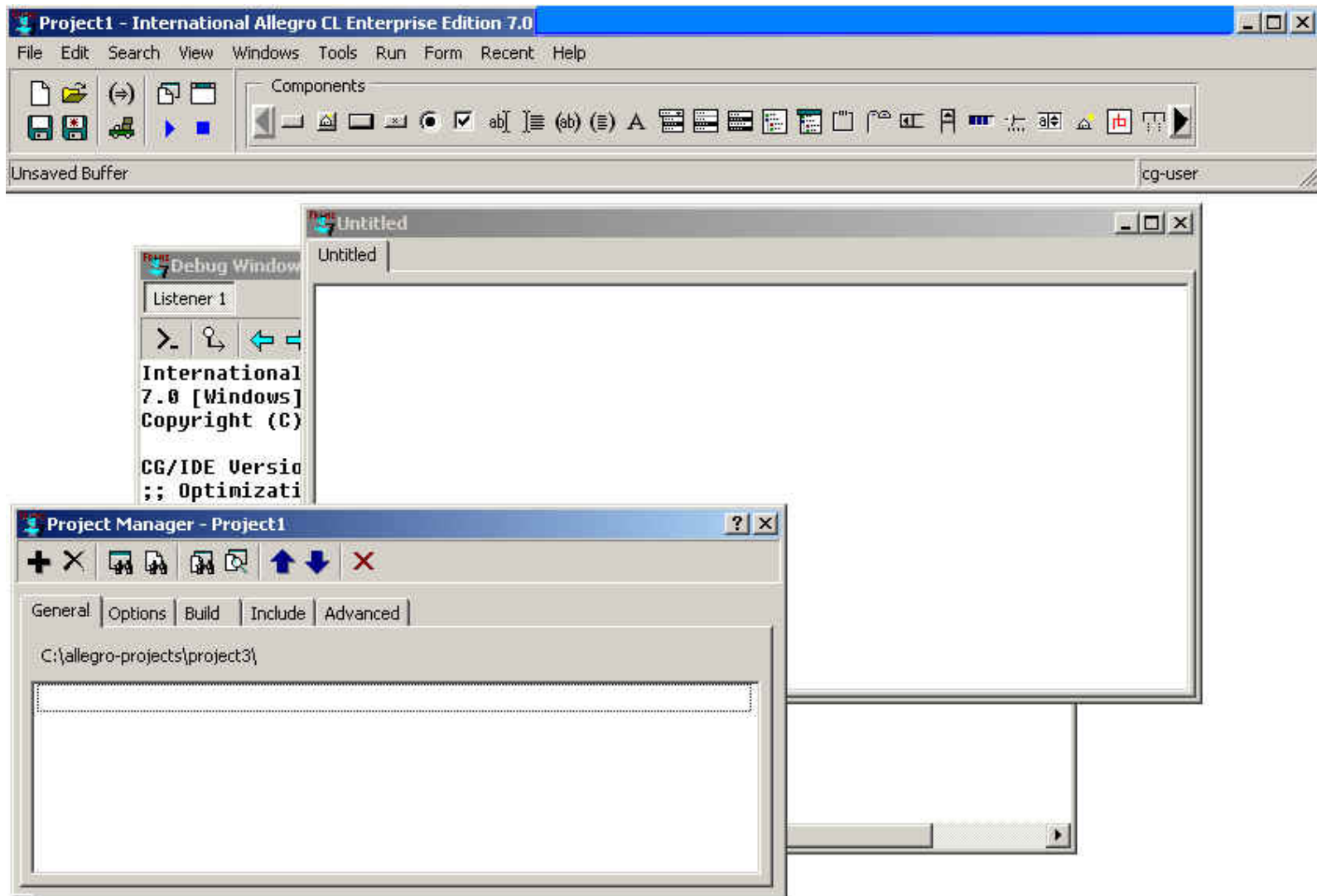
- **release-notes.htm:** the Release Notes for Allegro CL and all add on products.
- **startup.htm:** this document describes how to start Allegro CL and what the startup procedure is. See particularly **Starting on Windows machines** in that document.
- **introduction.htm:** this document is the introduction to and overview of the documentation and has links to all other documents.

- **cgide.htm**: this document is the introductory document for Common Graphics and the Integrated Development Environment. It contains pointers to the rest of the CG and IDE documentation.
- **eli.htm**: this is the documentation file for the Emacs-Lisp interface. While the IDE can provide a substitute for running Allegro CL as a subprocess of Emacs, many users like to use Emacs along with the IDE. The Emacs-Lisp interface provides many commands etc. for facilitating running Allegro CL in that way. See particularly **What should be in your .emacs file** in that document for information on what to add to your *.emacs* in order to ensure the Emacs-Lisp interface code is loaded.

5.1 Testing that the installation of Allegro CL on Windows was successful

We will test the installation by starting Allegro CL from the menu. You should see an `Allegro CL 7.0' item on the Programs submenu of the Start menu (`Allegro CL Trial 7.0' for the Trial Edition). In non-Trial editions, that item has a submenu, with (among other items) submenus Modern ACL Images and ANSI ACL Images. We will start a Modern ACL with the IDE in this example. The Trial edition just has a submenu for Documentation since there is only one image, started with the Allegro CL menu item.

Choose **Start | Programs | Allegro CL 7.0 | Modern ACL Images | Allegro CL (w IDE, Modern)** (or with the Trial edition, **Start | Programs | Allegro CL Trial 7.0 | Allegro CL**). You should see a splash window and then a window titled `Allegro Common Lisp Console'. Shortly thereafter, the Allegro CL Integrated Development Environment windows appear. After everything is started, your screen should look something like the following picture. (The windows in the picture have been rearranged and resized to make them fit and so what you see will be slightly different.)



There is a `cg-user(1) :` prompt in the Debug window. If the cursor is not already there, click on that window to make it the selected window and make sure the cursor is after that prompt.

To the prompt `cg-user(1) :`, enter the form `(require :build)`:

```
cg-user(1): (require :build)
; Fast loading from bundle code\build.fasl.
t
```

If you see the `Fast loading...` message, that means that Allegro CL can find the Allegro directory correctly and its library and it means that Allegro CL is correctly installed and working. You may now either exit Allegro CL by choosing **File | Exit** (that is, the **Exit** choice from the **File** menu) or you may continue using Allegro CL. If you choose to exit, a dialog will appear asking if you really want to exit. Answer Yes.

6.0 Installation instructions and information for AllegroStore users

Allegro CL 7.0 is distributed with AllegroStore version 2.1.8.

(AllegroStore is an add-on Object-Oriented database product that works with Allegro CL and ObjectStore, a database product from Excelon Corp. You must be licensed for AllegroStore to use it and to install ObjectStore. If you are not licensed for AllegroStore, you need not concern yourself with this section.

ObjectStore versions with AllegroStore version 2.1.8/Allegro CL 7.0

A new version of ObjectStore is supplied with AllegroStore 2.1.8/Allegro CL 7.0. AllegroStore 2.1 (supplied with Allegro CL 6.1) will work with this new version.

- solaris: Objectstore 6.0sp7
 - redhat6: Objectstore 6.0sp7
 - hpux10: Objectstore 51sp5a
 - hpux11.32: Objectstore 51sp5a
 - hpux11.64: Objectstore 6.0sp7
 - windows: Objectstore 6.0sp7
-

6.1 Pre-Installation notes for AllegroStore users

See [Section 2.3 Preparing for AllegroStore installation](#) for pre-installation information.

6.2 Compatibility notes for AllegroStore users

- ObjectStore 6.0 servers can act as ObjectStore 5.x servers. However, a 5.x client must communicate via a 5.x cache manager.
- ObjectStore 6.0 Service Pack 5 (and greater) clients are not compatible with earlier versions of the cache manager. The client and the cache manager must be exactly the same release version. Attempting to use a Service Pack 5 (or later) client with an earlier cache manager results in an `err_invalid_commsg` error message. When installing the latest release of ObjectStore, be sure to restart the cache manager.
- Databases created by ObjectStore 6.0 service pack 5 (or greater) can be read by 5.1 service pack 5a servers.

Maintaining multiple versions of the ObjectStore

The easiest method of running multiple versions of ObjectStore is to install one version per machine.

It is possible, but not recommended, to install multiple ObjectStore clients or servers on a single machine. If you believe this configuration option may be necessary, please contact franz support (support@franz.com) for assistance.

6.3 Installing ObjectStore

The following subsections tell you how to install ObjectStore and how to configure it for use with AllegroStore, and how to test the result.

6.3.1 Step 1: Copying and unencrypting the ObjectStore distribution

This must be done for every platform.

The new ObjectStore distribution is in an encrypted file `ostore.blf`.

1. **Copy the `ostore.blf` file.** Copy `[directory you downloaded into]/ostore/ostore.blf` to `[allegro directory]/astore/`.
2. **Run the program to unencrypt `ostore.blf`.**

On UNIX: execute the following command in the Allegro directory:

```
% sh ostore.sh
```

On Windows: run *ostore.bat* in the Allegro directory.

If you are licensed (according to your license file *devel.lic*) to install ObjectStore, an ObjectStore distribution will now be in place in *[Allegro directory]/ostore/*. To install it, go to [Section 6.3.2 Step 2: Install ObjectStore](#).

6.3.2 Step 2: Install ObjectStore

UNIX

The supported operating system version levels are:

- Solaris
- HP-UX (32-bit and 64-bit Lisps)
- LINUX redhat

Make sure the `OS_ROOTDIR` environmental variable is not set before beginning the installation. The installation procedure will print an error message telling you to un-set the `OS_ROOTDIR` variable if it is set when you begin the installation. The *osinstal* (note: one 'l' in 'instal') script starts the installation. You must be root to run this script.

```
# cd [Allegro directory]/ostore
# ./osinstal
```

When the *osinstal* script completes its work, it instructs you what to do next. When running the **osconfig** step (as described in those instructions), calling **osconfig** with a "server" argument is recommended for most users. If you desire a client only installation, use a "client" argument.

Windows

Run **[Allegro directory]/ostore/setup.exe** to begin the installation. The default installation option installs both a client and a server. If you desire a client only installation, choose a custom installation and pick the appropriate custom settings. Note that if you choose the default installation, you will see a number of message boxes containing installation warnings. These warnings should all be ignored. We recommend that you answer 'yes' to the **Reinitialize the ObjectStore Server log file?** query, and we recommend that you let the installation process configure your computer to automatically start the Ostore server and/or client cache manager.

On Windows 98, you may need to increase your environment space for MS-DOS. Do this by adding the following line to your *config.sys* file on your boot drive:

```
SHELL=C:\COMMAND.COM C:\ /E:2048 /P
```

If you get "out of environment space" error when booting Windows 95, then you will need to add the above line.

Special note for Windows ME users

The Ostore installation on Windows creates a file *C:\OS_auto.bat* which sets the necessary environment values, and inserts a single `CALL` statement in *C:\AUTOEXEC.BAT* that invokes *OS_auto.bat* at boot time. Unfortunately, Windows ME appears to remove `CALL` statements from *AUTOEXEC.BAT* each time it boots -- perhaps this is a security feature -- which will prevent Ostore from working properly. The workaround for Windows ME installations is to append the several `SET` statements that are the contents of *OS_auto.bat* directly at the end of *AUTOEXEC.BAT*.

6.3.3 Step 3: Set up the individual Runtime environments

Each user should update their environment appropriately for their use of AllegroStore. The environment variables listed next are used by ObjectStore and you may wish to change them from their default value. Variables required for proper AllegroStore operation are noted in the following table; don't remove those.

- `OS_ROOTDIR`. Setting this is **required**. The value of this variable should be the name of the root directory of the ObjectStore installation. The value of this variable is set automatically on Windows by the ObjectStore installation.
- `AS_CONFIG_PATH`. Setting this is **required** unless the variable `astore:*as-config-path*` is given an appropriate value in the client image. The value of `AS_CONFIG_PATH` or `astore:*as-config-path*` should be the AllegroStore configuration directory. For a server installation, it should be the same as the Allegro directory. For a client installation, it should be the Allegro directory on an AllegroStore server machine. If that directory is not mounted on the client, specify the path as `host:path`, where `host` is the server host name, and `path` is the Allegro directory path on the server machine.
- `PATH`. Setting this is **required**. On Windows, the value of this variable is set automatically by the ObjectStore installation. On Unix, the value

of this variable should include \$AS_CONFIG_PATH and \$OS_ROOTDIR/bin.

- **OS_AS_SIZE.** Setting this is **required on HP-UX 32-bit Lisp versions only (HP-UX 11.0 for 32-bit Lisp)** and **not required on other platforms.** Specifies the maximum size of the persistent virtual memory address space. On HP-UX, using the default value results in a conflict with the Lisp C heap starting address (0x64000000). Specify the value 0x14000000, which will not result in a conflict with the Lisp C heap.

Operating-System-Specific Configurations and Notes

- **Solaris.** If the ObjectStore installation choice that creates links in /usr/lib was not selected, then the LD_LIBRARY_PATH environmental variable must include the ObjectStore lib subdirectory, \$OS_ROOTDIR/lib, as well as /usr/lib and /usr/local/lib.
- **HP-UX.** The SHLIB_PATH environmental path must include the Allegro directory, as well as /usr/lib. If the ObjectStore installation choice that creates links in /usr/lib was not selected, then it must also include the ObjectStore lib subdirectory, \$OS_ROOTDIR/lib. The versions for HP-UX 11.0 use a supplied custom Lisp executable, **aslisp**, to run AllegroStore.
- **HP-UX 11.0 for 64-bit Lisp.** This is in addition to the note just above. A supplied custom Lisp executable, **aslisp**, is required when running AllegroStore.
- **LINUX x86.**
- **Windows 98.** Add the AS_CONFIG_PATH variable setting statement to the *Os_auto.bat* file located in your C:\ directory. For example, if you installed Allegro CL in *C:\Program Files\acl70*, a server installation would add the line:

```
SET AS_CONFIG_PATH=C:\Program Files\acl70
```

On all Windows versions: though not suggested by the ObjectStore installation process, Windows users should reboot after setting up the runtime environments.

- **Windows NT/2000/XP.** Right-click on the My Computer desktop icon and choose Properties. On the Environment tab add AS_CONFIG_PATH.

On all Windows versions: though not suggested by the ObjectStore installation process, Windows users should reboot after setting up the runtime environments.

- **Windows ME.** [This repeats what is said in the **Special note for Windows ME users** in section [Section 6.3.2 Step 2: Install ObjectStore.](#)] The Ostore installation on Windows creates a file *C:\OS_auto.bat* which sets the necessary environment values, and inserts a single CALL statement in *C:\AUTOEXEC.BAT* that invokes *OS_auto.bat* at boot time. Unfortunately, Windows ME appears to remove CALL statements from *AUTOEXEC.BAT* each time it boots -- perhaps this is a security feature -- which will prevent Ostore from working properly. The workaround for Windows ME installations is to append the several SET statements that are the contents of *OS_auto.bat* directly at the end of *AUTOEXEC.BAT*.

On all Windows versions: though not suggested by the ObjectStore installation process, Windows users should reboot after setting up the runtime environments.

6.3.4 Step 4: Build an AllegroStore Lisp image [optional]

Creating a Lisp image with AllegroStore preloaded means you will not have to load it at the start of each Lisp session using AllegroStore.

Start Allegro CL: UNIX

On HP-UX 11.0 you must use the executable *aslisp* or *aslisp8*. These executables are needed on HP-UX 11.00 to be able to load the AllegroStore shared library. If you use *mlisp[8]* or *alisp[8]* on HP-UX 11.00, the load of this shared library will fail.

On other UNIX platforms, you can use *mlisp* or *alisp*, both of which have International Character set support, or *mlisp8* or *alisp8*, which do not. (*mlisp* and *mlisp8* are case-sensitive executables/images; *alisp* and *alisp8* are not.)

Command lines for HP-UX 11.0 (32-bit and 64-bit Lisp)

```
;; HP-UX 11.00 (to run a case-sensitive
;; image with International Character set support)
;;
aslisp -I mlisp.dxl
```

```
;; HP-UX 11.00 (to run a case-insensitive
;; image with International Character set support)
;;
aslisp -I alisp.dxl
```

Installation of Allegro CL 7.0 and related products

```
;; HP-UX 11.00 (to run a case-sensitive
;; image without International Character set support)
;;
aslisp8 -I mlisp8.dxl

;; HP-UX 11.00 (to run a case-insensitive
;; image without International Character set support)
;;
aslisp8 -I alisp8.dxl
```

Command lines for all other UNIX

```
;; Other UNIX (to run a case-sensitive image with
;; International Character set support)
;;
mlisp

;; Other UNIX (to run a case-insensitive image with
;; International Character set support)
;;
alisp

;; Other UNIX (to run a case-sensitive image without
;; International Character set support)
;;
mlisp8

;; Other UNIX (to run a case-insensitive image without
;; International Character set support)
;;
alisp8
```

Start Allegro CL: Windows

On Windows, start Allegro CL from the Start menu choosing a menu item that contains AllegroStore in it. On Windows only, Lisp needs special command line arguments for AllegroStore to work properly. See the command line in the shortcut for the AllegroStore menu items for details. You can choose to use either the International (*mlisp* or *alisp*) or non-International (*mlisp8* or *alisp8*) versions to build your AllegroStore image.

Create pre-loaded AllegroStore image

To build a Lisp image with AllegroStore pre-loaded, evaluate the following form in Lisp:

```
(build-lisp-image "[Allegro CL directory]/astore.dxl"
                  :lisp-files '(:allegrostore))
```

This image can be started with the same executable used above, with the arguments `-I astore.dxl`

6.3.5 Step 5: Test the AllegroStore installation

Start Lisp as in [Step 4](#). Then, evaluate the following forms:

```
(require :allegrostore)
(load "[Allegro CL directory]/astore/verify.cl")
```

If you are testing a client only installation, you must edit the *verify.cl* file. Change the two "averify.db" strings to a string naming a file in a directory that is on a disk that is local to an AllegroStore server. If such a directory is not available via a network mount, use the "host:dir" format described above in the AS_CONFIG_PATH description. Note that "host" need not be same host specified in the AS_CONFIG_PATH variable.

On Windows, if you see an error message indicating that Ostore could not find a running server on your computer, run *Start/Programs/ObjectStore Win32/ObjectStore Setup*. Make sure you answer 'yes' when asked whether Ostore should reinitialize the server log file, 'yes' when asked whether Ostore should configure your computer to automatically start the server and/or cache manager, and 'yes' when asked whether Ostore should start the services 'now'. After exiting the Setup program, retry the AllegroStore test.

AllegroStore documentation

The AllegroStore manual is available in PDF format, [allegrostore.pdf](#).

7.0 Installing Emacs from the web

We no longer supply a version of Emacs on the CD. In past releases, the version on the CD quickly became out of date. Emacs is easily downloaded from multiple sources on the net. See www.franz.com/emacs/ for information.

There is a downloadable installer for **GNU Emacs on Windows** on www.franz.com/emacs/. That same location has links to locations from which to download Emacs for Unix platforms.

Once you have Emacs installed on your machine, you need to have it load the macs-Lisp interface files when it starts up. You do this by putting the appropriate form in your `.emacs` file, as described:

- **On Windows**, create a `.emacs` file or add the following to your existing `.emacs` file. (If you have a home directory on your Windows machines -- many people do not -- place the `.emacs` file there. Otherwise place the `.emacs` file in `c:\`).

```
(load "c:/program files/acl70/eli/fi-site-init")
```

That form assumes you installed Allegro CL in the standard location, `c:/program files/acl70/`. Replace that with the correct location if it is different.

- **On Unix/Linux/Mac OS X**, create a `.emacs` file or add the following to your existing `.emacs` file. The `.emacs` file goes in your home directory.

```
(load "/usr/local/acl70/eli/fi-site-init")
```

That form assumes you installed Allegro CL in the standard location, `/usr/local/acl70/`. Replace that with the correct location if it is different.

The page at www.franz.com/emacs/ has additional recommendation for the `.emacs` file, along with a list of convenient key bindings. See also [eli.htm](#): this is the documentation file for the Emacs-Lisp interface.

8.0 Installing OpenSSL libraries on Windows

For customers with an Enterprise license (or above), Allegro CL supports the Secure Socket Layer (SSL) protocol, as described in **Secure Socket Layer (SSL)** in [socket.htm](#). The OpenSSL libraries are necessary to make use of this facility. For all UNIX platforms (that is, all platforms except Windows), the libraries are part of the standard Allegro CL distribution and no special installation is required. For Windows, however, an extra installation step is required.

In the `windows/` directory on the CD, there is an `openssl/` subdirectory.

This directory contains a single file, `openssl.exe`. This is a self-extracting executable containing the necessary SSL libraries and files.

To install the libraries run **openssl.exe** and select a location with at least 3 megabytes of free space (the default location is `c:\openssl-0.9.6\`).

Next run the System program in the Control Panel and edit your PATH variable to include the directory where you installed the openssl libraries (if you installed in the default location `c:\openssl-0.9.6\`, that location should be in your PATH).

9.0 Other Allegro CL products

Allegro CL comes with various add-on products, such as the CLIM windowing system and Orblink. Some require additional licenses. Others are available to all users. All material needed for these products is read off the CD during installation. Only the license file determines whether products can be used or not. Contact your Franz Inc. Account Manager for information on licensing.

10.0 Other material on the CD

Also on the distribution CDs are the following directories:

- **cbind/** (on CD Two): the **cbind** facility provides tools for automatically generating Lisp code for calling foreign functions using information obtained by scanning C header files. This facility is not fully integrated into the release. It is only available for Sun Solaris and Windows. Look at the `cbind/[platform]/readme.txt` file for the appropriate platform ([platform] can be `sun`, or `windows`) on distribution **CD Two**.
- **doc/** (on CD Two): this directory contains PDF files made from the HTML documentation (in the `doc/` subdirectory of the distribution). These

are provided to make it easier to print parts of the documentation if desired.

Note: there are two directories named *doc/*: [*Allegro directory*]/*doc/* and [*CD*]/*doc/*. The first is part of the distribution and contains the HTML documentation (and a few PDF files for which there are no HTML equivalents). The second is on the CD and contains PDF files made from the documentation HTML files. These are provided as a convenience. You need not copy them from the CD if you do not wish to.

- **openssl/**: (on CD Two.) The sources of the OpenSSL libraries. See [Section 8.0 Installing OpenSSL libraries on Windows](#) and see **Secure Socket Layer (SSL)** in [socket.htm](#).

11.0 Getting a license file

You must have a license file to use Allegro CL and its associated products, and to install ObjectStore if you are an AllegroStore customer. The license file is not on the CD.

Professional and Enterprise customers with current maintenance agreements should have received an email message from Franz Inc. with instructions on how to obtain their license file. Trial Edition customers should receive such an email after providing the necessary information to Franz Inc. (usually by filling in a form on the Franz Inc. web site, www.franz.com).

The email sent by Franz Inc. gives an URL from which the license file can be retrieved. The email is in Mime format, with plain text and HTML versions. If you are able to read mail in a mime-enabled client, you will be able to click on the URL immediately.

You should retrieve the license as soon as you receive the email even if you have not downloaded the software. Then the license file will be ready when you install Allegro CL. The name of the file when it is put in the Allegro directory must be *devel.lic*. However, you may use any name when retrieving, renaming when you copy it to the Allegro directory later.

The license file is a text file which includes encrypted text. See **The Allegro CL license file** in [startup.htm](#) for a sample (with the encrypted text much and obviously modified).

If you upgrade your license or purchase add-on products, you will be sent email with instructions for retrieving a new license file. Placing the new license file in the Allegro directory is all you must do to use the upgraded version of the new add-on products (except users who add AllegroStore must install ObjectStore from the CD).

If you do not have a license file or the license file you have does not seem to license the correct product mix, **contact your Account Manager** for information. (That link goes to the file [introduction.htm](#). If that link does not work, call Franz Inc. in Oakland, California, at +1 510-452-2000 or send email to support@franz.com or info@franz.com. In email, be sure to identify yourself and provide information on how you can be contacted.)

12.0 Installing source code

In order to get source code (if your license allows it), you must return the source code license addendum included with the distribution. When that addendum is received, you will be sent a new license which allows installing source code. (Some sources are free to licensed customers and others are provided for an additional charge. If you have questions about getting source code, please **contact your Account Manager**.)

The sources available are:

- **Lisp**: The Lisp sources to basic Common Lisp and CLOS, plus many Allegro provided features (jLinker, regexp v2, etc) and Common Graphics, the IDE, and DDE on Windows. No compiler or runtime system is provided.
- **AODBC**: v1 and v2 Lisp sources, as well as v1 C sources.
- **MYSQL**: sources for Allegro MySQL (see [mysql.htm](#)).
- **ORACLE**: sources for Allegro Oracle Direct interface (see [oracle-interface.htm](#)).
- **CLIM**: Lisp sources to all of CLIM.
- **ORBLink**: the entire sources to ORBLink (all in Lisp).

To install sources, do the following:

1. **On Windows**, open the Windows Explorer.
2. **On Windows**, find the Allegro directory in the explorer (it is typically *c:\Program Files\acl70* but you may have chosen a different directory). **On UNIX**, **cd** to the Allegro directory (it is typically */usr/local/acl70/* but you may have chosen a different directory) in a shell.
3. **On Windows**, double-click on the files *srclisp.bat* (and also, if appropriate *srclim.bat*, *srcaodbc.bat*, *srcmysql.bat*, *srcoracle.bat*, and *srcorblink.bat*). Note that the CG and IDE sources are unpacked by *srclisp.bat*. **On UNIX**, run *./srclisp.sh* (and also, if appropriate *./srclim.sh*, *./srcaodbc.sh*, *./srcmysql.sh*, *./srcoracle.sh*, and *./srcorblink.sh*).

Assuming you have the new license with the source code module included, the encrypted source files in the *src/* directory should be unencrypted and expanded so the source code will be located in subdirectories of the *src/* directory.

13.0 The Trial Edition

The Trial edition, available for Windows, FreeBSD, Linux, and Mac OS X, is provided free of charge so that potential users may gain experience using Allegro CL and some add-ons before purchasing. The Trial edition is fully described on the Franz Inc. web site (www.franz.com, click on the **Download** button to see information about Trial software). That information may be updated more frequently than the information here. If there is a conflict between the information on the Web site and the information given here, the information on the Web site is correct.

To obtain a Trial edition, you typically fill out an information form on the Franz Inc. web site. Sometime after submitting the form, you will receive email with information on retrieving a license (see [Section 11.0 Getting a license file](#)) and information on downloading. The Trial edition is not available on a CD. It must be downloaded. The Windows version does not include the documentation (but instead links to the documentation on the Web site).

13.1 Information on the Trial license

The license file you receive for the Trial edition will expire after 60 days. You can run the program **newlicense** to update your license file. **newlicense** is an item on the Allegro CL 7.0 Trial item on the Start menu. You can also run it by double-clicking on *newlicense.exe* in the Allegro directory.

newlicense can be run as early as seven days before the license expires, so timely action will result in no interruption of Lisp service. Each renewal is good for 60 days and there is no limit on the number of renewals.

newlicense must be run in the Allegro directory.

newlicense updates your license by sending your current license to Franz Inc. An error message will be displayed if there are any problems. If the update succeeds, your license is updated.

13.2 Information on installing the Trial edition

You must download the files associated with the Trial edition. Download into an empty directory on your machine. For Windows, a single file named something like *acl70_trial.exe* is downloaded. For FreeBSD, Linux (both Redhat and LinuxPPC), and Mac OS X, two files, *acl70_trial.bz2* and *bunzip2* are downloaded.

Once the download has succeeded, follow the steps starting [here](#) in [Section 4.0 Notes for installation of Allegro CL on UNIX](#) for Linux, FreeBSD, and Mac OS X. Follow the steps starting [here](#) in [Section 5.0 Installation on Windows](#) for Windows. In both cases, the CD directory is the directory you downloaded into, not the CD drive on your machine.