

Installation of Allegro CL 8.0 and related products

This document contains the following sections:

[1.0 Installation introduction](#)

[1.1 Definitions of some terms used in this document](#)

[1.2 Installation sizes and supported Operating System versions](#)

[2.0 Preinstallation Steps](#)

[2.1 Increasing the default stack size on HP \(formerly Compaq\) Alpha and Mac OS X machines](#)

[2.2 The procfs package must be installed on Linux and FreeBSD](#)

[2.3 You can leave Allegro CL 7.0 installed](#)

[3.0 Installation steps](#)

[4.0 Notes for installation of Allegro CL on UNIX \(including Linux and Mac OS X\)](#)

[4.1 Testing that the installation of Allegro CL on Unix was successful](#)

[5.0 Installation on Windows](#)

[5.1 Testing that the installation of Allegro CL on Windows was successful](#)

[6.0 Installing Emacs from the web](#)

[7.0 Installing OpenSSL libraries on Windows](#)

[8.0 Other Allegro CL products](#)

[9.0 Other material](#)

[10.0 Getting a license file](#)

[11.0 Installing source code](#)

[12.0 The Trial Edition](#)

[12.1 Information on the Trial license](#)

[12.2 Information on installing the Trial Edition](#)

[12.3 Creating additional Trial Edition images](#)

[13.0 The Student Edition](#)

[13.1 Information on installing the Student Edition](#)

[14.0 Distribution on CDs](#)

1.0 Installation introduction

This document describes how to install Allegro CL and related products.

Allegro CL is typically downloaded. Customers receive instructions on how to download information about downloading Allegro CL 8.0 over the net. Trial users download their copy from the Franz Inc. web site (www.franz.com). Trial users should go to [Section 12.0 The Trial Edition](#).

You can install Allegro CL from the download without any key or code (though you need a license file, as described below, in order to use Allegro CL). Once Allegro CL is installed, the documentation, including this file, is available in the *doc/* subdirectory (this file is *doc/installation.htm*). A copy of this file is also available on the Franz Inc. web site (www.franz.com).

franz.com).

All types (Professional, Enterprise, etc.) of Allegro CL for a particular platform and all add-on products are downloaded onto your computer. A license file named *devel.lic* controls which products will be usable. This license file is supplied separately, as described in [Section 10.0 Getting a license file](#). **Allegro CL will not work without a license file properly installed in the Allegro directory. The download does not contain a license file. You must obtain a license file from Franz Inc. separately from the download.**

If you do not have a license file or the license file you have does not seem to license the correct product mix, *contact your Account Manager* for information. (If that link does not work, call Franz Inc. in California, USA, at +1 510-452-2000 or send email to support@franz.com or info@franz.com. In email, be sure to identify yourself and provide information on how you can be contacted.)

Once you have installed Allegro CL and the license file is in place, you can use the licensed Allegro CL version and all licensed add-on products. If you upgrade your Allegro CL version, or purchase a license for an add-on product, you will be given an updated license file. You do not have to download further material (except in rare instances or when you have obtained a license for another platform). Simply installing the new license file makes the newly licensed products available for use.

1.1 Definitions of some terms used in this document

- **Allegro directory:** the directory where Allegro CL is installed. On Windows (where the default is programmed into the installation program), the default is *[Main Drive, typically C]:\Program Files\acl80*. When we describe a pathname including the Allegro directory, we typically surround it in brackets, for example: the directory where you put patch files is *[Allegro directory]/update/*.
- **Download file:** the zipped tar file (on UNIX) or the self-extracting executable file (on Windows) which contains the Allegro CL software and which is unzipped and untarred (UNIX) or run (Windows).
- **Platform:** the type of computer you are installing on. Platforms are identified by Operating Systems (Windows, Solaris, HP-UX, etc.)

1.2 Installation sizes and supported Operating System versions

The size of the Allegro directory after installation is approximately 200 Mbytes on UNIX/Linux/Mac OS X and 240 Mbytes on Windows. More space may be required during installation for temporary files.

The minimal supported versions of the operating systems on platforms where Allegro CL runs are listed below. Allegro CL will generally work without change on operating system versions released after the release of Allegro CL 8.0. If you have a problem, contact support@franz.com for assistance.

32-bit platforms

- HP Tru64 UNIX 5.1
- HP-UX 11.00
- FreeBSD 4.x and 5.x

- Linux (x86), glibc 2.2
- Linux (PPC), glibc 2.3
- Apple Mac OS X 10.4
- Microsoft Windows 2000/XP/Server 2003
- IBM AIX 5.1
- Sun Solaris 2.8

64-bit platforms

- HP Tru64 UNIX 5.1
 - HP-UX 11.00
 - Apple Mac OS X 10.4
 - Linux (AMD64), glibc 2.3
 - IBM AIX 5.1
 - Sun Solaris 2.8 on Sparc
 - Sun Solaris 2.10 on AMD 64
-
-

2.0 Preinstallation Steps

Before installing Allegro CL, consider the following:

1. **Default stack sizes are likely too small on HP (formerly Compaq) Alpha and Mac OS X machines.** See [Section 2.1 Increasing the default stack size on HP \(formerly Compaq\) Alpha and Mac OS X machines](#), which directs you to instructions in the *release-notes.htm* for increasing the default stack sizes on those machines.
 2. **On Linux and FreeBSD, the procfs package must be installed.** See [Section 2.2 The procfs package must be installed on Linux and FreeBSD](#) for details.
 3. **You need not uninstall Allegro CL 7.0** See [Section 2.3 You can leave Allegro CL 7.0 installed](#).
-

2.1 Increasing the default stack size on HP (formerly Compaq) Alpha and Mac OS X machines

The default stack size limit is apparently 2 Megabytes on a HP (formerly Compaq) Alpha and 512 Kilobytes on a Mac OS X machine. These values are too low for normal stack overflow handling when using Allegro CL. You can increase the stack size in a particular shell, but it is better to increase it for the machine as a whole. **Note that this change is best performed by a system administrator or similarly trained person.**

See *HP Alpha running Tru64: default stack size should be increased in release-notes.htm* for information on changing the default on HP Alpha machines.

See *Increasing stack size on Mac OS X in release-notes.htm* for information on changing the default on Mac OS X machines.

2.2 The procs package must be installed on Linux and FreeBSD

On Linux and FreeBSD systems, the **procs** package is required for Allegro CL operation. **Procs** is the **process filesystem** package which establishes memory map info for each process in */proc* on the system (see the man page for **procs**). Allegro CL uses that info to determine where **mmap()** can be done. The **Procs** package is optional on these operating systems and may not be installed. Please see your operating system documentation for further information on installing the package if it is not there.

(Procs is necessary on all UNIX and UNIX-like operating systems, but it does not seem to be optional except on Linux and FreeBSD. If it is optional, it must be installed in order to use Allegro CL.)

2.3 You can leave Allegro CL 7.0 installed

It is not necessary to delete version 7.0 if you have that installed, but note that on Windows, the registry will be updated so extensions (such as *.lpr* and *.dwl*) refer to Allegro CL 8.0 instead of earlier versions.

3.0 Installation steps

If you have the **Trial Edition**, see [Section 12.0 The Trial Edition](#). If you have the **Student Edition**, see [Section 13.0 The Student Edition](#).

Here are the installation steps in brief:

1. **Get the license file.** See [Section 10.0 Getting a license file](#). You can install without getting a license file but you cannot use the product without a license file.
2. **Download the software.** You should have received instructions for downloading from Franz Inc. If not, *contact your Account Manager* for information. (If that link does not work, call Franz Inc. in California, USA, at +1 510-452-2000 or send email to support@franz.com or info@franz.com. In email, be sure to identify yourself and provide information on how you can be contacted.) We assume below you download the software into **/usr/tmp/** on UNIX and **C:\\tmp** on Windows.

On UNIX (including Linux and Mac OS X): you download two files, **acl80.bz2** and **bunzip2**.

On Windows, you download one file, **acl80.exe**.

3. **UNIX:** **cd** into the directory where the software was downloaded. On Solaris, for example, if you downloaded into **/usr/tmp/**

```
% cd /usr/tmp/
```

See [Section 4.0 Notes for installation of Allegro CL on UNIX \(including Linux and Mac OS X\)](#) for more details.

Windows: find the download executable file in your Windows Explorer.

4. **Decide where you wish to install the Allegro Directory.** On UNIX, the typical location is `/usr/local/acl80/` (`/usr/local/acl80_trial/` for the Trial Edition). On Windows, the typical location is `C:\Program Files\acl80\` (`>C:\Program Files\acl80_trial/` for the Trial Edition and `>C:\Program Files\acl80_student/` for the Student Edition). However, you can choose any location you like.
5. **UNIX: uncompress and untar the distribution file.** The command is (using the typical location)

```
% ./bunzip2 < acl80.bz2 | (cd /usr/local; tar xf -)
```

See [Section 4.0 Notes for installation of Allegro CL on UNIX \(including Linux and Mac OS X\)](#) for more details on this step.

Windows: run the exe file. Double click on it if using the Windows Explorer or execute it if at a Command Prompt. Follow the instructions that appear. See [Section 5.0 Installation on Windows](#) for full details.

6. **Copy the license file into [Allegro directory]/devel.lic.** The license file you obtained in step one above should be copied into the Allegro directory and its name should be changed to `devel.lic`.
7. **Install Emacs off the web (optional).** See [Section 6.0 Installing Emacs from the web](#) for details.
8. **[Windows only] Install OpenSSL libraries if desired and available (optional).** Users interested in writing applications using secure sockets may wish to install the OpenSSL libraries. See [Section 7.0 Installing OpenSSL libraries on Windows](#) for instructions and more details. OpenSSL libraries need installation only for Windows.
9. **Run `sys:update-allegro`:** patches (correcting bugs or providing new features) are released for Allegro CL regularly. For normal usage, we recommend that you update regularly, including immediately after installation. Do this by starting Lisp and evaluating `(sys:update-allegro)`. See **`sys:update-allegro`** and also *Patches* in *introduction.htm*.

4.0 Notes for installation of Allegro CL on UNIX (including Linux and Mac OS X)

Download the software

Download the distribution file specific to the platform you are using (this file will have a name like `acl80.bz2`). Also download the **`bunzip2`** executable. Download into a location of your choice (we assume you chose `/usr/tmp/` in the discussion below).

You should have received instructions for downloading from Franz Inc. If not, *contact your Account Manager* for information. (If that link does not work, call Franz Inc. in California, USA, at +1 510-452-2000 or send email to support@franz.com or info@franz.com. In email, be sure to identify yourself and provide information on how you can be contacted.)

Note to Trial and Student users: the link from [Section 12.2 Information on installing the Trial Edition](#) comes here.

Follow the instructions below to install the Trial Edition for Linux, FreeBSD, and Mac OS X.

1. **Change download directory** (the one where the **acl80.bz2** file and **bunzip2** files were downloaded to). If you downloaded to **/usr/tmp/**, the command would be:

```
% cd /usr/tmp/
```

2. **Run the following commands to install.** Replace */usr/local* with the name of the directory you wish to be above the Allegro directory, if you wish to use a different location (if you have **bunzip2** installed elsewhere and did not download it, use its path rather than *.*).

```
% ./bunzip2 < acl170.bz2 | (cd /usr/local; tar xf -)
```

A directory named *acl80/* (*acl80_trial/* for trial) should not be present in the location specified to the **tar** portion of the command above (*/usr/local/acl80/* or */usr/local/acl80_trial/* if you used the exact command above). It will be created and is the *Allegro directory*.

3. **Copy the license file** into the Allegro directory and change its name to *devel.lic*.
4. **Run `sys:update-allegro`:** patches (correcting bugs or providing new features) are released for Allegro CL regularly. For normal usage, we recommend that you update regularly, including immediately after installation. Do this by starting Lisp and evaluating (`sys:update-allegro`). See **sys:update-allegro** and also *Patches* in *introduction.htm*.

Allegro CL is now installed. See [Section 4.1 Testing that the installation of Allegro CL on Unix was successful](#) for information on how to test that Allegro CL is installed properly.

Also see these documentation files to start with:

- *release-notes.htm*: the Release Notes for Allegro CL and all add-on products.
- *startup.htm*: this document describes how to start Allegro CL and what the startup procedure is. See particularly *Starting on UNIX machines* in that document.
- *introduction.htm*: this document is the introduction to and overview of the documentation and has links to all other documents.
- *eli.htm*: this is the documentation file for the Emacs-Lisp interface. On UNIX, Allegro CL, works best for development when run as a subprocess of Emacs. The Emacs-Lisp interface provides many commands etc. for facilitating running Allegro CL in that way. See particularly *What should be in your .emacs file* in that document for information on what to add to your *.emacs* in order to ensure the Emacs-Lisp interface code is loaded. Allegro Composer only works when Allegro CL is run as a subprocess of Emacs. See *composer.htm*.

There is no Allegro Composer executable or image file after installation. To use Allegro Composer, evaluate (`require :composer`) after starting Allegro CL. An Allegro Composer binary can be built by using *buildcomposer.cl*. See *composer.htm*.

There is no CLIM image file, but one can be built using *buildclim.cl*.

Note for CLIM on Linux, FreeBSD: you must have version 2.2 or later of Motif. (Version 2.2 was released in early 2002.) A free version is available from www.openmotif.org. Redhat Linux 7.2 is supplied with Lesstif, a version of Motif that **does not work with CLIM**. See [this faq item](#) for information on how to install Redhat Linux 7.2 without lesstif and how to uninstall lesstif if already present. On all other Unix platforms, CLIM uses the platform-supplied Motif.

Note for CLIM on Mac OS X: you must have version 2.2.2 Motif. This version is available at no charge from www.openmotif.org.

Users wishing to display Japanese characters need the k14 font. As also noted *here* in *release-notes.htm*, the *k14* font is needed to display Japanese characters in a CLIM demo. This font appears to be missing from most X server font libraries. We are making available a public domain version of this font in the file [*Allegro directory*]/*misc/k14.pcf*. Please see your X server documentation for information on how to install this file as a valid font.

4.1 Testing that the installation of Allegro CL on Unix was successful

We will test the installation by starting Allegro CL from a shell prompt. To a shell prompt, enter the full path of the Allegro CL executable (on installation, one of *mlisp*, *alisp*, *mlisp8*, and *mlisp8*; only *alisp* is provided with the Trial Edition) to the shell prompt.

Assuming the Allegro directory is */usr/local/ac180/* and that you wish to run the *mlisp* executable, enter:

```
/usr/local/ac180/mlisp
```

With the Trial Edition, only *alisp* is provided, so do:

```
/usr/local/ac180_trial/alisp
```

Allegro CL should start up. You will see the banner and perhaps additional messages, and the first prompt (the exact text depends on the platform and which image you are running, so you may see something slightly different from what is printed here):

```
Allegro CL Enterprise Edition 8.0 [HP Prism]
Copyright (C) 1985-2005, Franz Inc., Oakland, CA, USA. All Rights Reserved.
;; Optimization settings: safety 1, space 1, speed 1, debug 2.
;; For a complete description of all compiler switches given the
;; current optimization settings evaluate (EXPLAIN-COMPILER-SETTINGS).
;; Current reader case mode: :case-sensitive-lower
user(1):
```

You may see the message

```
pure lisp library being relocated by XXX bytes
```

(where XXX is some integer). Do not worry if you do. The message is for information only. It means that the memory location preassigned for the Lisp library was unavailable and a new location is being used.

To the Lisp prompt `user(1):`, enter the form `(require :build)`:

```
user(1): (require :build)
; Fast loading from bundle code/build.fasl.
t
```

If you see the `Fast loading...` message, that means that Allegro CL can find the Allegro directory correctly and its library and it means that Allegro CL is correctly installed and working. You may now either exit Allegro CL by entering `:exit` (see the top-level command `:exit`):

```
user(2): :exit
```

or you may continue using Allegro CL.

5.0 Installation on Windows

Download the software

Download the distribution file specific to the platform you are using (this file will have a name like `acl80.exe`). Download into a location of your choice.

Note to Trial and Student users: the link from [Section 12.2 Information on installing the Trial Edition](#) comes here. Follow the instructions below to install the Trial Edition for Windows.

1. **Exit all running programs.** Installation is most likely to be trouble free if there are no other programs running.
2. **Display the Windows Explorer.** Find the `acl80.exe` file you downloaded (Trial users: the file is `acl80_trial.exe`).
3. **Double click on `acl80.exe`** to execute it. This starts an installation program. During the installation, dialogs appear asking for input, as described in the next steps. (If you are installing the Trial Edition, the filename is `acl80_trial.exe`.)
4. **First dialog:** this is an informational dialog telling you again to exit all other running programs and informing you about licenses and copyrights. Click on the Cancel button if you wish to stop the installation (perhaps to exit running programs). Click Next to continue.
5. **Second dialog:** this dialog asks you for the location of the Allegro directory. A default is provided: **Program Files \acl80\ (Program Files\acl80_trial** for the Trial Edition) on main drive (often C: but can be another drive). If you wish a location other than the default, click on the Browse button and select a directory. If you select an existing directory (not recommended), a warning dialog is displayed saying the directory exists and asking if you want to continue. Once you have selected the desired location for the Allegro directory, click the Next button. You can cancel by clicking the Cancel button.
6. **Third dialog:** this dialog asks if you wish to leave out portions of the distribution: the [Allegro CL] documentation (about 26 Mbytes), the ANSI spec documentation (about 11 Mbytes), and contributed files (about 3300 Kbytes). By default, the first two are included and the third left out.

If you do not install either the Allegro CL documentation and the ANSI spec, shortcuts relating to documentation on the Allegro CL menu item on the Start menu will link you to versions on the Franz Inc. web site. (However, if you have the space, it is best to include the documentation.) If you include the Allegro CL documentation but not the ANSI spec, links from the Allegro CL documentation to the ANSI spec will not work.

Check or uncheck the desired options. Click Cancel to cancel installation, Back to choose a different location, and

Next to continue. If you click Next again, the installation will take place.

7. **A dialog may appear when the installation is finished** telling you you must restart the machine to complete the installation and asking if you want to do this now. (Restarting is not always necessary. Clicking Cancel ends the installation process for now and does not restart the machine. If restarting is required and you choose to delay it, do not use Allegro CL until you have restarted. We assume in the subsequent steps you have restarted if necessary.)
8. **Copy the license file into the Allegro directory** and change its name to *devel.lic*.
9. **Run `sys:update-allegro`**: patches (correcting bugs or providing new features) are released for Allegro CL regularly. For normal usage, we recommend that you update regularly, including immediately after installation. Do this by starting Lisp and evaluating `(sys:update-allegro)`. See **`sys:update-allegro`** and also *Patches* in *introduction.htm*.

Once Allegro CL is installed, see [Section 5.1 Testing that the installation of Allegro CL on Windows was successful](#) for information on how to test that Allegro CL is installed properly.

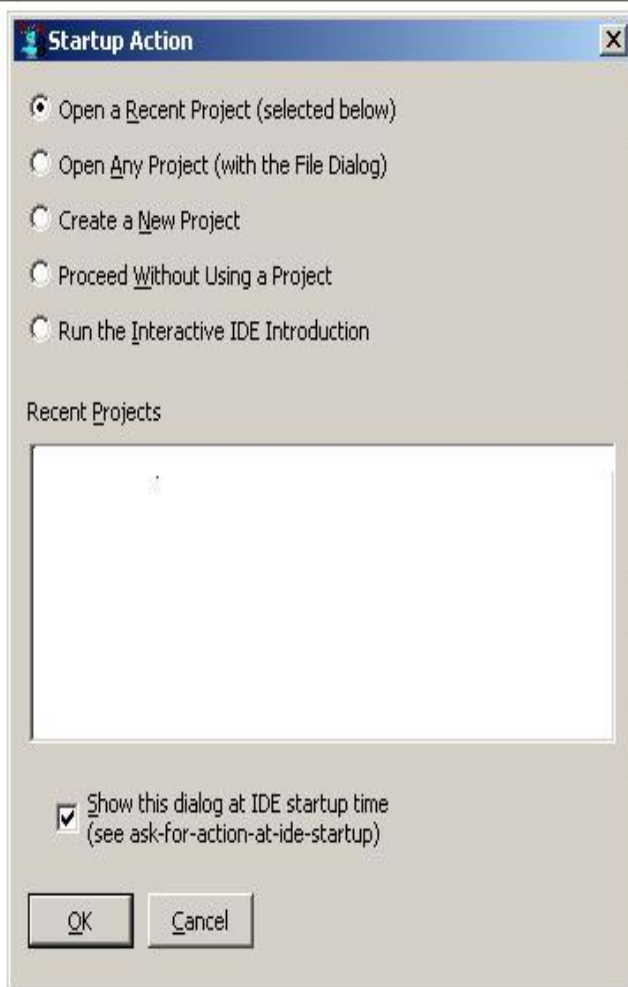
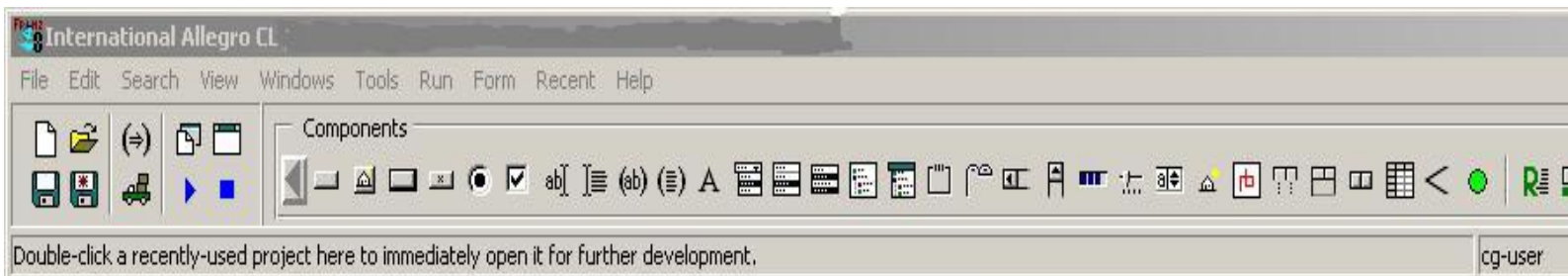
Allegro CL is now installed. See these documentation files to start with:

- *release-notes.htm*: the Release Notes for Allegro CL and all add-on products.
- *startup.htm*: this document describes how to start Allegro CL and what the startup procedure is. See particularly *Starting on Windows machines* in that document.
- *introduction.htm*: this document is the introduction to and overview of the documentation and has links to all other documents.
- *cgide.htm*: this document is the introductory document for Common Graphics and the Integrated Development Environment. It contains pointers to the rest of the CG and IDE documentation.
- *eli.htm*: this is the documentation file for the Emacs-Lisp interface. While the IDE can provide a substitute for running Allegro CL as a subprocess of Emacs, many users like to use Emacs along with the IDE. The Emacs-Lisp interface provides many commands etc. for facilitating running Allegro CL in that way. See particularly *What should be in your .emacs file* in that document for information on what to add to your *.emacs* in order to ensure the Emacs-Lisp interface code is loaded.

5.1 Testing that the installation of Allegro CL on Windows was successful

We will test the installation by starting Allegro CL from the menu. You should see an 'Allegro CL 8.0' item on the Programs submenu of the Start menu ('Allegro CL Trial 8.0' for the Trial Edition). That item has a submenu, with (among other items) submenus **Modern ACL Images** and **ANSI ACL Images**. We will start a Modern ACL with the IDE in this example. The Trial does not submenus for images, since only one is supplied (there are submenus for other things).

Choose **Start | Programs | Allegro CL 8.0 | Modern ACL Images | Allegro CL 8.0 (w IDE, Modern)** (or with the Trial Edition, **Start | Programs | Allegro CL Trial 8.0 | Allegro CL**). You should see a splash window and then a window titled 'Allegro Common Lisp Console'. Shortly thereafter, the Allegro CL Integrated Development Environment windows appear. After everything is started, your screen should look something like the following picture. (The windows in the picture have been rearranged and resized to make them fit and so what you see will be slightly different.)



Oakland, CA, USA. All Rights Reserved.

is licensed to:

Settings\dm\My Documents\allegro-prefs.cl.

space 1, speed 1, debug 2.

compiler switches given the current optimizer-settings).

ensitive-lower

user" to "common-graphics-user"]

The **Startup Action** dialog asks what you want to have happen on startup. Just click cancel for now (see *cgide.htm* for information on using the IDE). Once that dialog goes away, you will see the Debug Window with a Lisp prompt:

```

International Allegro CL
8.0 [Windows]
Copyright (C) 1985-2005, Franz Inc., Oakland, CA, USA. All Rights Reserved.

CG version 1.77 / IDE version 1.74
;; Optimization settings: safety 1, space 1, speed 1, debug 2.
;; For a complete description of all compiler switches given the current optimization
;; settings evaluate (explain-compiler-settings).
;;---
;; Current reader case mode: :case-sensitive-lower

[changing package from "common-lisp-user" to "common-graphics-user"]
cg-user(1): |

```

To the prompt `cg-user(1):`, enter the form `(require :build)`:

```

cg-user(1): (require :build)
; Fast loading from bundle code\build.fasl.
t

```

If you see the 'Fast loading...' message, that means that Allegro CL can find the Allegro directory correctly and its library and it means that Allegro CL is correctly installed and working. You may now either exit Allegro CL by choosing **File | Exit** (that is, the **Exit** choice from the **File** menu) or you may continue using Allegro CL. If you choose to exit, a dialog will appear asking if you really want to exit. Answer Yes.

6.0 Installing Emacs from the web

We no longer supply a version of Emacs on the CD. In past releases, the version on the CD quickly became out of date. Emacs is easily downloaded from multiple sources on the net. See www.franz.com/emacs/ for information.

There is a downloadable installer for **GNU Emacs on Windows** on www.franz.com/emacs/. That same location has links to locations from which to download Emacs for Unix platforms.

Once you have Emacs installed on your machine, you need to have it load the Emacs-Lisp interface files when it starts up. You do this by putting the appropriate form in your `.emacs` file, as described:

- **On Windows**, create a `.emacs` file or add the following to your existing `.emacs` file. (If you have a home directory on your Windows machine -- many people do not -- place the `.emacs` file there. Otherwise place the `.emacs` file in `c:\`.)

```
(load "c:/program files/acl80/eli/fi-site-init")
```

That form assumes you installed Allegro CL in the standard location, **c:/program files/acl80/**. Replace that with the correct location if it is different.

- **On Unix/Linux/Mac OS X**, create a `.emacs` file or add the following to your existing `.emacs` file. The `.emacs` file goes in your home directory.

```
(load "/usr/local/acl80/eli/fi-site-init")
```

That form assumes you installed Allegro CL in the standard location, **/usr/local/acl80/**. Replace that with the correct location if it is different.

The page at www.franz.com/emacs/ has additional recommendations for the `.emacs` file, along with a list of convenient key bindings. See also *eli.htm*: this is the documentation file for the Emacs-Lisp interface.

7.0 Installing OpenSSL libraries on Windows

For customers with an Enterprise license (or above), Allegro CL supports the Secure Socket Layer (SSL) protocol, as described in *Secure Socket Layer (SSL)* in *socket.htm*. The OpenSSL libraries are necessary to make use of this facility. For all UNIX platforms (that is, all platforms except Windows), the libraries are part of the standard Allegro CL distribution and no special installation is required. For Windows, however, an extra installation step is required.

The Allegro directory contains the file *openssl.exe*. This is a self-extracting executable containing the necessary SSL libraries and files.

To install the libraries run **openssl.exe** and select a location with at least 3 megabytes of free space (the default location is `c:\openssl-0.9.8a\`).

Next run the System program in the Control Panel and edit your PATH environment variable to include the directory where you installed the openssl libraries, so if you installed in the default location, add `c:\openssl-0.9.8a`.

8.0 Other Allegro CL products

Allegro CL comes with various add-on products, such as the CLIM windowing system and Orblink. Some require additional licenses. Others are available to all users. All material needed for these products is in the distribution. Only the license file determines whether products can be used or not. Contact your Franz Inc. Account Manager for information on licensing.

9.0 Other material

Also available for download are:

- **cbind/**: the **cbind** facility provides tools for automatically generating Lisp code for calling foreign functions using information obtained by scanning C header files. This facility is not fully integrated into the release. It is only available for Sun Solaris and Windows. You can download it from ftp://ftp.franz.com/pub/acl80/cbind_sun.tgz for Suns and ftp://ftp.franz.com/pub/acl80/cbind_windows.zip for Windows.
 - **Doc PDF files**: this directory contains PDF files made from the HTML documentation (in the *doc/* subdirectory of the distribution). These are provided to make it easier to print parts of the documentation if desired. The PDF versions are available for download [here](#).
-
-

10.0 Getting a license file

You must have a license file to use Allegro CL and its associated products. The license file is not on the CD.

Professional and Enterprise customers with current maintenance agreements should have received an email message from Franz Inc. with instructions on how to obtain their license file. Trial Edition customers should receive such an email after providing the necessary information to Franz Inc. (usually by filling in a form on the Franz Inc. web site, www.franz.com).

The email sent by Franz Inc. gives an URL from which the license file can be retrieved. The email is in Mime format, with plain text and HTML versions. If you are able to read mail in a mime-enabled client, you will be able to click on the URL immediately.

You should retrieve the license as soon as you receive the email even if you have not downloaded the software. Then the license file will be ready when you install Allegro CL. The name of the file when it is put in the Allegro directory must be *devel.lic*. However, you may use any name when retrieving, renaming when you copy it to the Allegro directory later.

The license file is a text file which includes encrypted text. See *The Allegro CL license file* in *startup.htm* for a sample (with the encrypted text much and obviously modified).

If you upgrade your license or purchase add-on products, you will be sent email with instructions for retrieving a new

license file. Placing the new license file in the Allegro directory is all you must do to use the upgraded version of the new add-on products.

If you do not have a license file or the license file you have does not seem to license the correct product mix, *contact your Account Manager* for information. (That link goes to the file *introduction.htm*. If that link does not work, call Franz Inc. in Oakland, California, at +1 510-452-2000 or send email to support@franz.com or info@franz.com. In email, be sure to identify yourself and provide information on how you can be contacted.)

11.0 Installing source code

In order to get source code (if your license allows it), you must return the source code license addendum included with the distribution. When that addendum is received, you will be sent a new license which allows installing source code. (Some sources are free to licensed customers and others are provided for an additional charge. If you have questions about getting source code, please *contact your Account Manager*.)

The sources available are:

- **Lisp**: The Lisp sources to basic Common Lisp and CLOS, plus many Allegro provided features (jLinker, regexp v2, etc) and Common Graphics, the IDE, and DDE on Windows. No compiler or runtime system is provided.
- **AODBC**: v1 and v2 Lisp sources, as well as v1 C sources.
- **MYSQL**: sources for Allegro MySQL (see *mysql.htm*).
- **ORACLE**: sources for Allegro Oracle Direct interface (see *oracle-interface.htm*).
- **CLIM**: Lisp sources to all of CLIM.
- **ORBLink**: the entire sources to ORBLink (all in Lisp).

To install sources, do the following:

1. **On Windows**, open the Windows Explorer.
2. **On Windows**, find the Allegro directory in the explorer (it is typically *c:\Program Files\acl80* but you may have chosen a different directory).
On UNIX, **cd** to the Allegro directory (it is typically */usr/local/acl80/* but you may have chosen a different directory) in a shell.
3. **On Windows**, double-click on the files *srclisp.bat* (and also, if appropriate *srcclim.bat*, *srcaodbc.bat*, *srcmysql.bat*, *srcoracle.bat*, and *srcorblink.bat*). Note that the CG and IDE sources are unpacked by *srclisp.bat*.
On UNIX, run *./srclisp.sh* (and also, if appropriate *./srcclim.sh*, *./srcaodbc.sh*, *./srcmysql.sh*, *./srcoracle.sh*, and *./srcorblink.sh*).

Assuming you have the new license with the source code module included, the encrypted source files in the *src/* directory should be unencrypted and expanded so the source code will be located in subdirectories of the *src/* directory.

12.0 The Trial Edition

The 7.0 Trial edition became available in early August, 2005. The 8.0 Trial edition will be released sometime after the release of Allegro CL 8.0. In this section we describe the 7.0 installation. (References above to 8.0 Trial edition are anticipatory. This document will be revised when 8.0 Trial becomes available.

The Trial Edition, available for Windows, FreeBSD, Linux, and Mac OS X, is provided free of charge so that potential users may gain experience using Allegro CL and some add-ons before purchasing. The Trial Edition is fully described on the Franz Inc. web site (www.franz.com, click on the **Download** button to see information about Trial software). That information may be updated more frequently than the information here. If there is a conflict between the information on the Web site and the information given here, the information on the Web site is correct.

To obtain a Trial Edition, you typically fill out an information form on the Franz Inc. web site. Sometime after submitting the form, you will receive email with information on retrieving a license (see [Section 10.0 Getting a license file](#)) and information on downloading. The Trial Edition is not available on a CD. It must be downloaded. The Windows version does not include the documentation (but instead links to the documentation on the Web site).

12.1 Information on the Trial license

The license file you receive for the Trial Edition will expire after 30 days. You can run the program **newlicense** to update your license file. **newlicense** is an item on the Allegro CL Trial item on the Start menu. You can also run it by double-clicking on *newlicense.exe* in the Allegro directory.

newlicense can be run as early as seven days before the license expires, so timely action will result in no interruption of Lisp service. Each renewal is good for 30 days and there is no limit on the number of renewals.

newlicense must be run in the Allegro directory.

newlicense updates your license by sending your current license to Franz Inc. An error message will be displayed if there are any problems. If the update succeeds, your license is updated.

12.2 Information on installing the Trial Edition

You must download the files associated with the Trial Edition. Download into an empty directory on your machine. For Windows, a single file named something like *acl70_trial.exe* is downloaded. For FreeBSD, Linux (x86), Linux (PPC), and Mac OS X, two files, *acl70_trial.bz2* and *bunzip2* are downloaded.

Once the download has succeeded, follow the steps starting [here](#) in [Section 4.0 Notes for installation of Allegro CL on UNIX \(including Linux and Mac OS X\)](#) for Linux, FreeBSD, and Mac OS X. Follow the steps starting [here](#) in [Section 5.0 Installation on Windows](#) for Windows. In both cases, the CD directory is the directory you downloaded into, not the CD drive on your machine.

12.3 Creating additional Trial Edition images

To make the downloadable file as small as possible, we have only included one Allegro CL image, one that includes the IDE and is in International "ANSI" mode (case insensitive upper, as opposed to case sensitive lower of "Modern" images).

The other images which are commonly found in an Allegro CL installation are:

mlisp	Modern base Lisp image, international (16-bit characters)
alisp	ANSI base Lisp image, international (16-bit characters)
allegro	Modern IDE image, international (16-bit characters)
alisp8	ANSI base Lisp image, 8-bit characters (not available with trial)
mlisp8	Modern base Lisp image, 8-bit characters (not available with trial)

To build one of the available above images (the 8-bit images are unavailable), start up **allegro-ansi.exe** and evaluate one or more of the following forms in the Debug window:

```
;; mlisp:
(progn
  (build-lisp-image "mlisp.dxl" :case-mode :case-sensitive-lower
    :include-ide nil :restart-app-function nil
    :restart-init-function nil)
  (sys:copy-file "sys:allegro-ansi.exe" "sys:mlisp.exe"))

;; alisp:
(progn
  (build-lisp-image "alisp.dxl" :case-mode :case-insensitive-upper
    :include-ide nil :restart-app-function nil
    :restart-init-function nil)
  (sys:copy-file "sys:allegro-ansi.exe" "sys:alisp.exe"))

;; allegro:
(progn
  (build-lisp-image "allegro.dxl" :case-mode :case-sensitive-lower)
  (sys:copy-file "sys:allegro-ansi.exe" "sys:allegro.exe"))
```

Evaluating any of the above forms does not add a menu item to the Start Menu. To run the resulting image, you will need to run the executable created in each form.

13.0 The Student Edition

The 8.0 Student edition will be released sometime after the release of Allegro CL 8.0. In this section we describe the 7.0 Student installation. (References above to 8.0 Student edition are anticipatory. This document will be revised when 8.0 Student becomes available.)

The Student Edition, available for Windows, FreeBSD, Linux, and Mac OS X, is available for sale at the [Franz Store](#). It is a slightly restricted version of the Enterprise Edition of Allegro CL 7.0. Certain add-ons are not supported in the base product, but are available for purchase. Sale is restricted to bona fide students. The Student Edition is fully described on the [Franz Store](#) web site. That information may be updated more frequently than the information here. If there is a conflict between the information on the Web site and the information given here, the information on the Web site is correct.

When you purchase a Student Edition, you will receive an email with information on retrieving a license (see [Section 10.0 Getting a license file](#)) and information on downloading. The Student Edition is not available on a CD. It must be downloaded.

Documentation not included

To reduce the download time, the documentation is not included in the Student Edition download. The documentation is available at <http://www.franz.com/support/documentation/>. There are links on that page allowing you to download the documentation if desired. The Windows version includes standard Windows tools for accessing documentation. These automatically link to the version on the Website unless the documentation is downloaded.

13.1 Information on installing the Student Edition

Here are the installation steps for the student Edition in brief:

1. **Get the license file.** See [Section 10.0 Getting a license file](#). You can install without getting a license file but you cannot use the product without a license file.
2. **Download the software.** Information on downloading should have been sent to you when you purchased the Student Edition. If you bought a UNIX version (FreeBSD, Linux, or Mac OS X), the files `acl70_student.bz2` and, if necessary, the `bunzip2` decompression program will be downloaded. If you bought the Windows version, the self-extracting executable file `acl70_student.exe` will be downloaded. Here will assume the files for UNIX will be downloaded into the `/usr/tmp/` directory and the file for Windows will be downloaded into the `c:\temp\` folder.
3. **Decide where you wish to install the Allegro Directory.** On UNIX, the typical location is `/usr/local/acl70_student/`. On Windows, the typical location is `C:\Program Files\acl70_student\`. However, you can choose any location you like.
4. **UNIX: uncompress and untar the distribution file.** Enter this command in `/usr/tmp/` (or wherever the downloaded files are):

```
% ./bunzip2 < acl70_student.bz2 | (cd /usr/local; tar xf -)
```

Windows: run the exe file. Double click on it if using the Windows Explorer. Execute it if at a Command Prompt or a DOS prompt. Follow the instructions that appear.

5. **Copy the license file into [Allegro directory]/devel.lic.** The license file you obtained in step one above should be copied into the Allegro directory and its name should be changed to `devel.lic`.
6. **Install Emacs off the web (optional).** See [Section 6.0 Installing Emacs from the web](#) for details.
7. **Start Lisp and run sys:update-allegro:** patches (correcting bugs or providing new features) are released for Allegro CL regularly. For normal usage, we recommend that you update regularly, including immediately after installation. Do this by starting Lisp and evaluating `(sys:update-allegro)`. See **sys:update-allegro** and also *Patches* in *introduction.htm*.

Somewhat more verbose instructions are available [here](#) in [Section 4.0 Notes for installation of Allegro CL on UNIX \(including Linux and Mac OS X\)](#) for Linux, FreeBSD, and Mac OS X and [here](#) in [Section 5.0 Installation on Windows](#) for Windows. Note these longer instructions discuss a distribution CD, which is not available for the Student Edition. When those instructions refer to a directory on the CD directory, use the directory you downloaded the files into.

14.0 Distribution on CDs

While it is always best to download the software (because the download version will be the latest available), regular customers can request the distribution on a CD. The installation instructions are the same except you typically install from a directory on the CD rather than from the location of the downloaded files. Additional instructions will be sent with the CD.